

## **MHRS Research/ Catherine Chevalier Woods circa 1901/ PJ Anderson /February 22, 2012**

The research goal was to identify homestead sites and other structures situated on lands now within the boundaries of the Forest Preserve District of Cook County. Catherine Chevalier Woods was chosen based on the availability of a 1901 Riverside Topo Quad Map provided in JPEG format and an 1861 Plat Map of Leyden Township.

The Topo map information was evaluated through interaction with Google Earth to determine the coordinates of areas now within FPDCC boundaries. Coordinate interrogation was based on 1 minute latitude and longitude increments until a suitable target area was determined.

The selection made encompasses the majority of present day Catherine Chevalier Woods and has sufficient targets for exploration. Two targets were chosen.

Target 1 is located in the north end of the woods with proximity to the parking lot.

Target 2 is located in the southwest portion of the woods with access off of Desplaines River Road.

Coordinates for the target points were determined by interrogation of the JPEG using Paint.Net and through calculation. The JPEG image was suitable but had some issues. The quadrangle was spilt into four sections. All four sections had a slightly different resolution that prevented piecing the quad together from the individual sections. The JPEG selected was also rotated counter clockwise about the North East corner. This rotation was ignored in the calculations.

The four boundary points and the target points were entered into Google Earth for viewing. Target 1 is located in a forested area with a clearing just to the northwest. Target 2 is situated on the east end of a clearing and appears to have an old access road or path just to the west of the clearing.

For background information on the Robinson Reserve and Catherine Chevalier try this link as a starting point.

<http://chicagowildernessmag.org/issues/fall2003/IWrobinson.html>

The following documents are provided as reference.

**1861 Leyden.jpg:** Plat of the Robinson Reserve.

**Riverside Quad 1901 Crop. jpg:** The northeast corner of the 1901 Riverside Quad with notations.

**Catherine Chevalier Woods Coordinates.jpg:** Jpg image of the Excel Spreadsheet used to calculate the coordinates of the target area and the target points

**Google Earth CCW.png:** Google Earth image of the target area and the target points

**Google Earth Target 1.png:** Google Earth image of Target 1

**Google Earth Target 2.png:** Google Earth image of Target 2

Good Luck Hunting!





**MHRS Research**  
**Catherine Chevalier Woods**  
**PJ Anderson**  
**February 22, 2012**

**Source Document**

Jpeg image of Northeast Corner of Riverside Topo Quad 1889-1901.  
 Jpeg Image interrogated using Paint.Net set at 66% zoom.  
 Jpeg origin at top left. Measurements made in pixels.  
 Topo NE Corner Coordinates in pixels (2167,168)  
 Jpeg is slightly rotated counter clockwise about NE Corner.

**Coordinates of NE Corner of Topo and Scale Points**

Latitude and Longitude Coordinates taken directly from the Topo  
 Pixel coordinates determined through interrogation of the Jpeg using Paint.Net

		Degrees	Minutes	Seconds	Decimal (deg)	Coordinates (px)
NE Corner Topo Point A	Latitude	42	0	0	42.00000000	168
	Longitude	-87	-45	0	-87.75000000	2167

Longitude Scale Point B	Latitude	42	0	0	42.00000000	172
	Longitude	-87	-50	0	-87.83333333	847

Latitude Scale Point C	Latitude	41	55	0	41.91666667	1917
	Longitude	-87	-45	0	-87.75000000	2167

**Scale Determination:**

The scales are calculated using pixel measurements taken over the 5 minute spans West and South of the NE Corner of the Topo. Measurements were made by interrogation of the Jpeg using Paint.Net.  
 The scale is set as pixels per degree of latitude and longitude.

	Point A (px)	Point B (px)	Point C (px)	Delta (px)	Scale (px/deg)
Latitude Scale	168	172	1917	1749	20988
Longitude Scale	2167	847	2167	1320	15840

**Coordinates of the Target Section and Pixel Coordinate Determination**

The Coordinates are the four corners of the target section.  
 The pixel coordinates are calculated using the NE Corner of the Topo as the reference point and the scales calculated above.

		Degrees	Minutes	Seconds	Decimal (deg)	Coordinates (px)
NE Corner of Target Point D	Latitude	41	59	0	41.98333333	518
	Longitude	-87	-51	0	-87.85000000	583

NW Corner of Target Point E	Latitude	41	59	0	41.98333333	518
	Longitude	87	52	0	-87.86666667	319

SW Corner of Target Point F	Latitude	41	58	0	41.96666667	868
	Longitude	87	52	0	-87.86666667	319

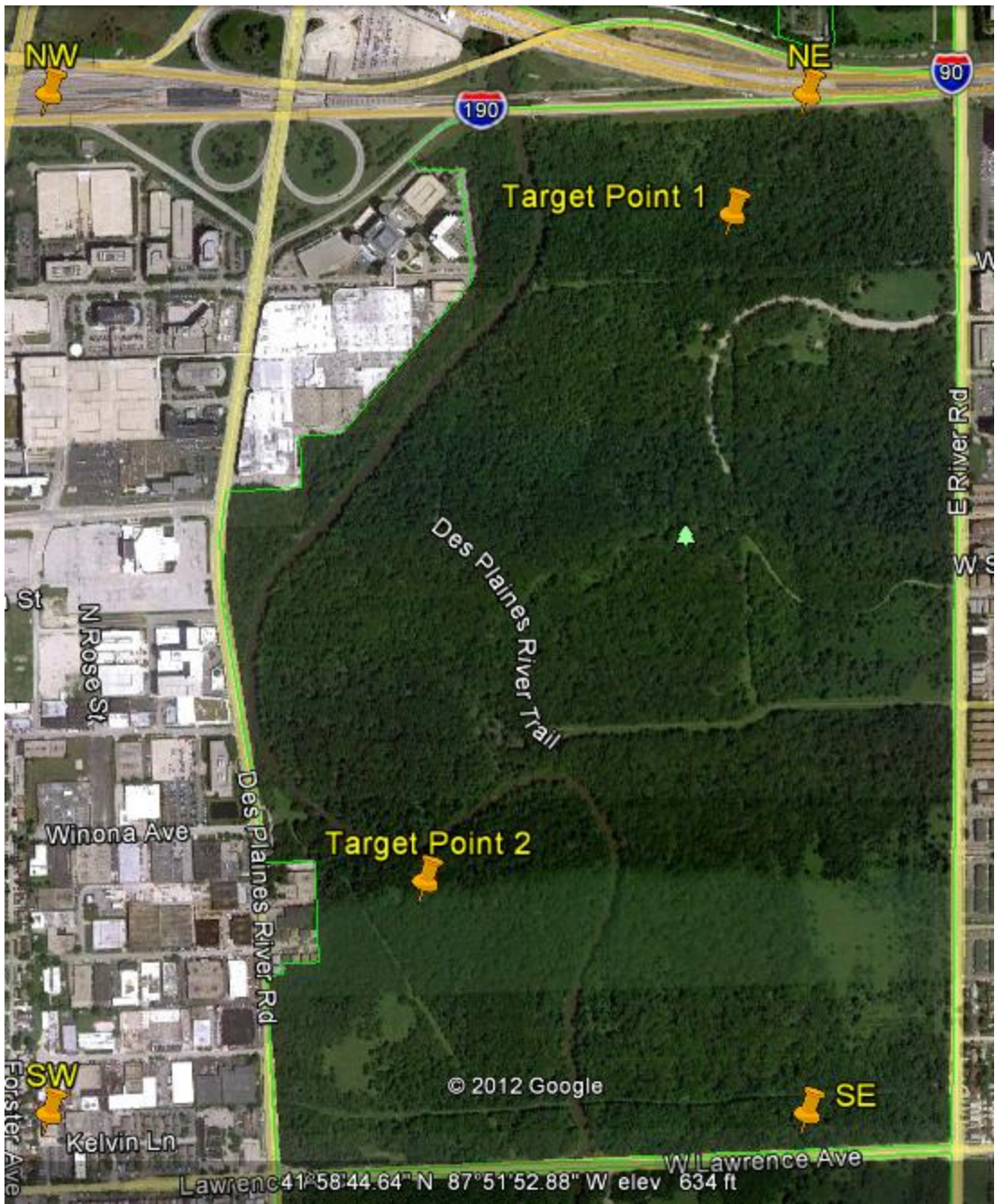
SE Corner of Target Point G	Latitude	41	58	0	41.96666667	868
	Longitude	87	51	0	-87.85000000	583

**Coordinates of the Target Points**

Pixel coordinates determined through interrogation of the Jpeg using Paint.net  
 The Latitude and Longitude coordinates are calculated.

		Decimal (deg)	Coordinates (px)
Target Point 1	Latitude	41.98137031	559
	Longitude	-87.85164141	557

Target Point 2	Latitude	41.97045931	788
	Longitude	-87.85839646	450



Target Point 1 

© 2012 Google

41°58'54.81" N 87°51'09.76" W elev 633 ft



Des Plaines River Rd

Target Point 2

© 2012 Google

Imagery Date: 6/30/2010 1999

41°58'17.58" N 87°51'34.33" W elev 614 ft